

# *Real-Time Tracking of Evacuees and Mobile Transportation Assets by the State of Texas*

**Gordon Wells**

Center for Space Research  
The University of Texas at Austin

**Lesia Dickson**

Radiant RFID, LLC  
Austin, Texas



National Evacuation Conference

New Orleans, Louisiana

5 February 2010

What is evacuee tracking?



# Functional Components

## Enrollment

(People, Pets, Assets)

PC's & Web-based Program

Barcode Scanners

Wristbands

Pet & Medical Asset Tags

Hand-Held Devices

Printers (for manifests)



# Functional Components

**Sheltering:**

**Reception** - Evacuees scanned into shelter manually or via RFID portal

**Relocation** - Evacuees scanned into new shelter or admitted to a hospital



# Reporting:

Radiant Location Incident STATUS UPDATE: 11:19 PM 3/18/2009

## EVENT STATUS DASHBOARD



Total Evacuee Population: 19



Total Buses Available: 1  
# Currently in Use: 1

### Evacuation Progress by Phase



At Enrollment



Current Number: 3  
% of Total Group: 16



En Route



Current Number: 4  
% of Total Group: 21



At Shelter



Current Number: 6  
% of Total Group: 32

### Reports

Buses staged

Evacuees Enrolled by Site - Detail

Evacuees Per Shelter Location

Buses in route to destination by destination

Evacuees Enrolled Summary

Evacuees Per Shelter Summary

Buses in route to destination

# What is evacuee tracking?

Evacuee tracking is an instantly updated record of the time/place history that traces an evacuee's movement from enrollment at embarkation to a sheltering destination and, finally, the return to home.

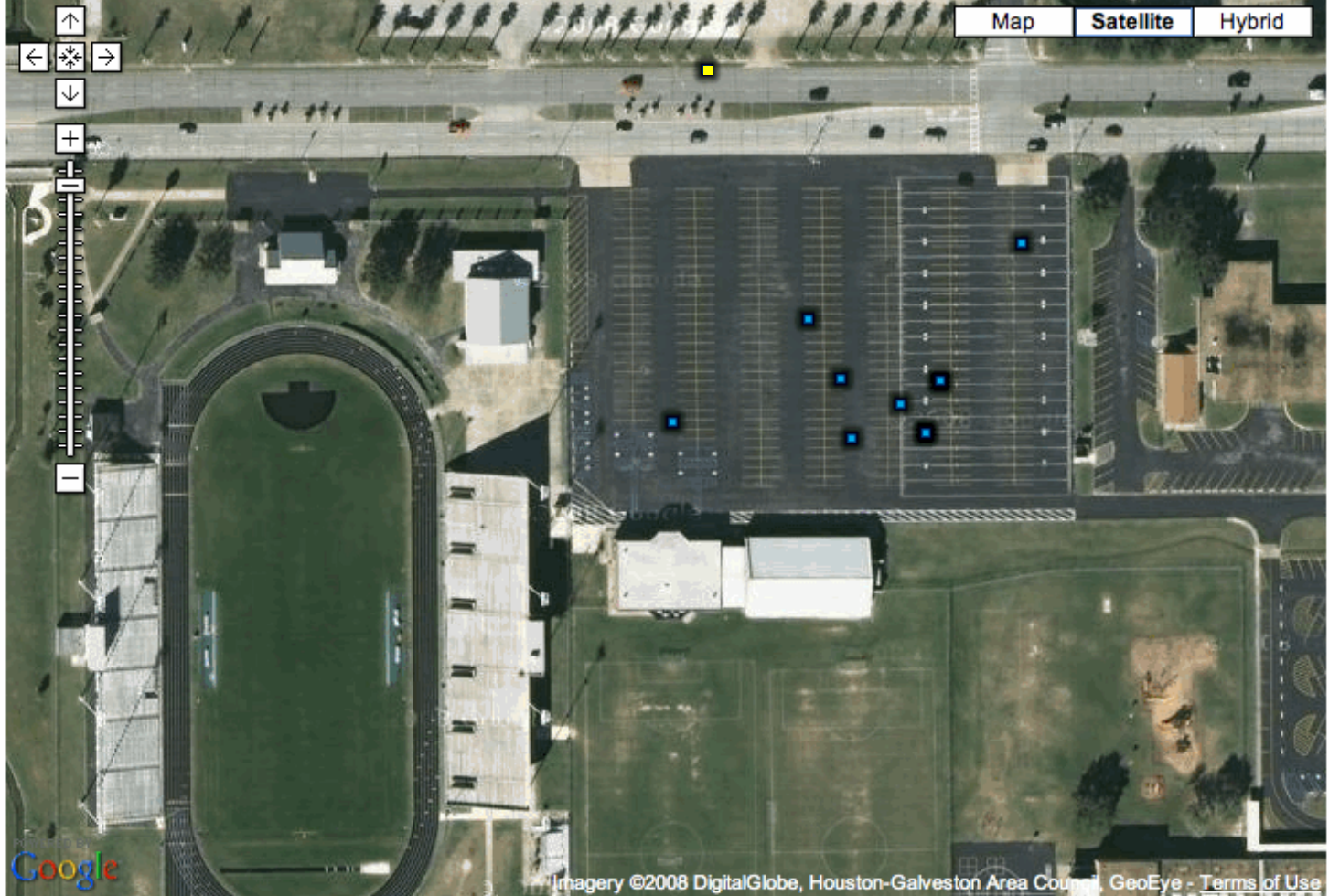
# What human factors influence evacuee tracking?

- Anxiety on the part of the evacuee and those conducting the evacuation
- Changes in an evacuee's medical condition
- An evacuee's independence to choose to move beyond the scope of the system
- Need to adjust to local decision-making processes and plans

# Special Needs Evacuation Tracking System



AJAX Response At: September 12, 2008 12:29:59 PM CDT



PhoneNumber: 5129929413  
Driver: SKRLEC JOHN 5106  
Plate: RB9R02  
WTSN: 0217198  
Speed: 25.625  
Direction: 270  
DateTime(GPS): 2008-09-12 09:37:37 CDT  
DateTime(DB): 2008-09-12 09:37:45 CDT  
Reason: time sent



What is the future of evacuee tracking?



# What is the future of evacuee tracking?

- Commodity devices (e.g., smartphones) will replace customized hardware
- RFID monitoring will become continuously active
- Automated data sharing will occur among state and local systems and among different state systems

