

Challenges in pre-landfall evacuation of medical special needs patients before Hurricane Ike

Richard N. Bradley, MD

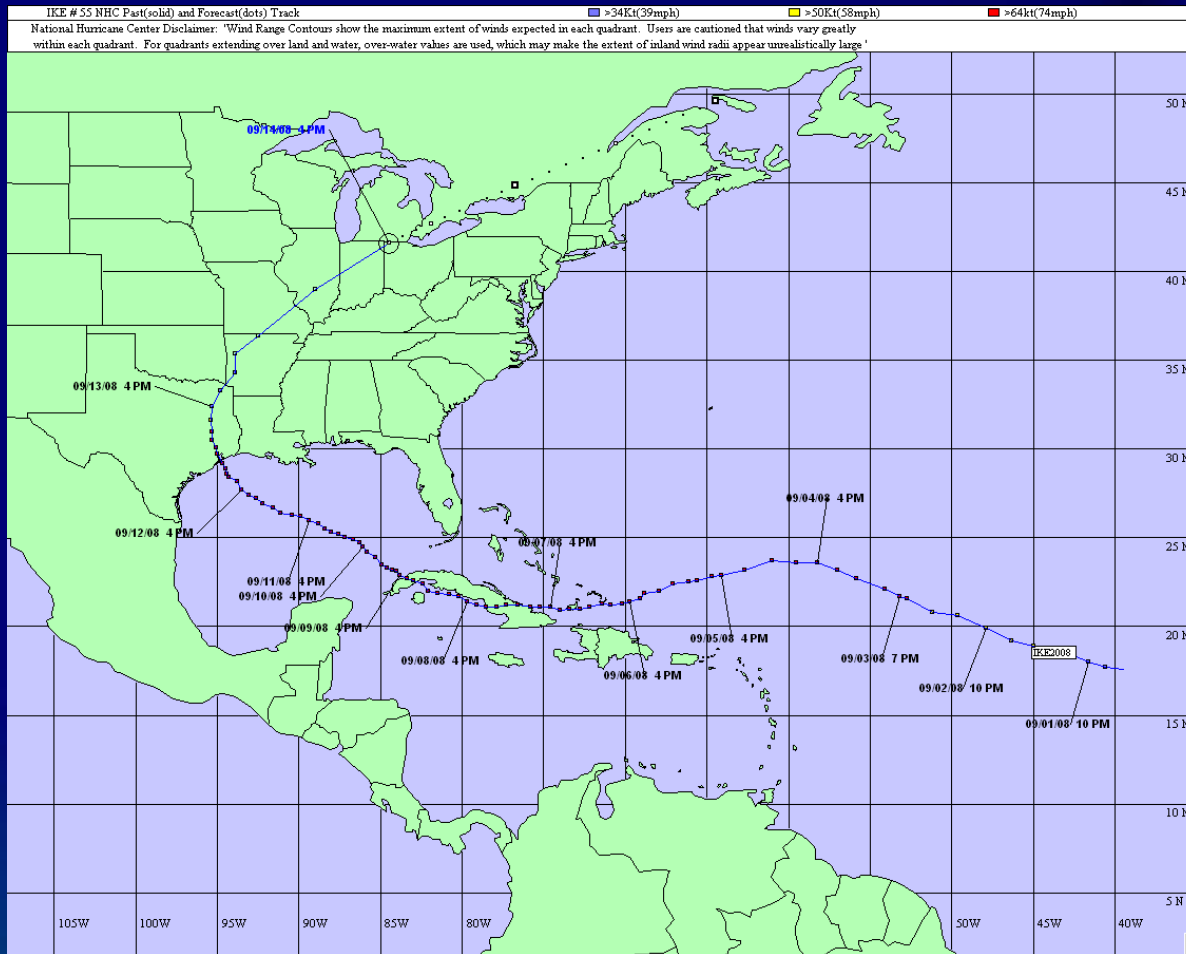


THE UNIVERSITY *of* TEXAS

HEALTH SCIENCE CENTER AT HOUSTON

February 5, 2010
National Evacuation Conference
New Orleans, Louisiana

Hurricane Ike



22 hours before landfall



Task

- Evacuation started at 1600 hrs.
- Deadline set at 0200 hrs.

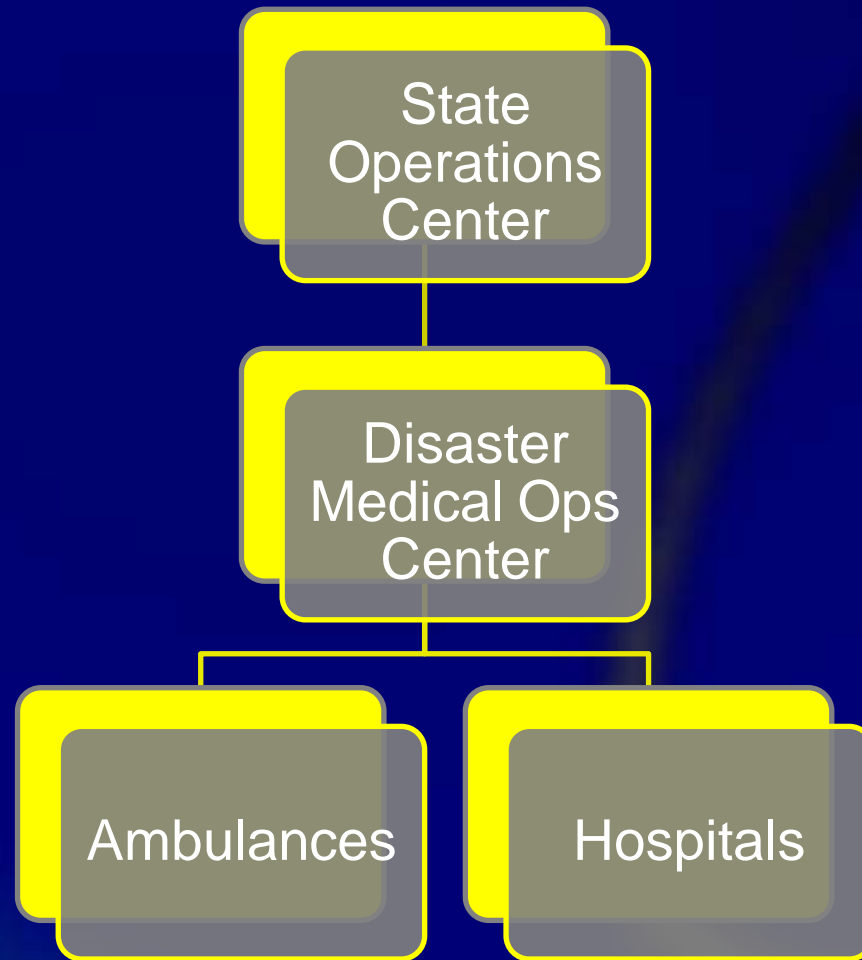
Emergency Support Functions in Medical Special Needs Evacuation

- ESF 1 – Transportation
- ESF 6 – Mass Care
- ESF 8 – Health and Medical
- ESF 9 – Search and Rescue





Health and Medical



Search and Rescue



Critical Issues

- Medical and Search and Rescue Coordination
 - Evacuee destinations
 - Transportation assets
- Delayed decisions on hospital evacuations

Conclusion

- Combine all functions directing medical special needs evacuation into one unified command
 - Transportation
 - Mass Care
 - Health and Medical
 - Search and Rescue

Questions?

Richard.N.Bradley@uth.tmc.edu



THE UNIVERSITY *of* TEXAS
HEALTH SCIENCE CENTER AT HOUSTON